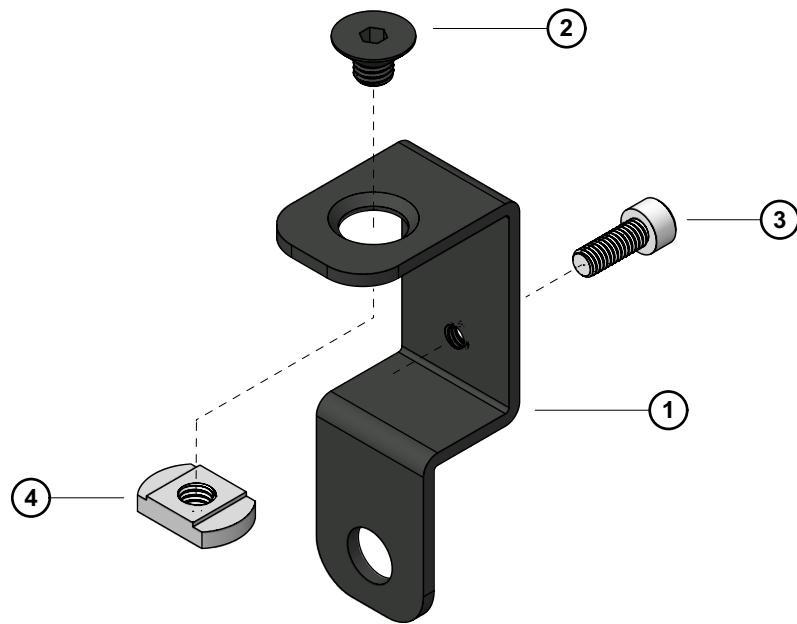
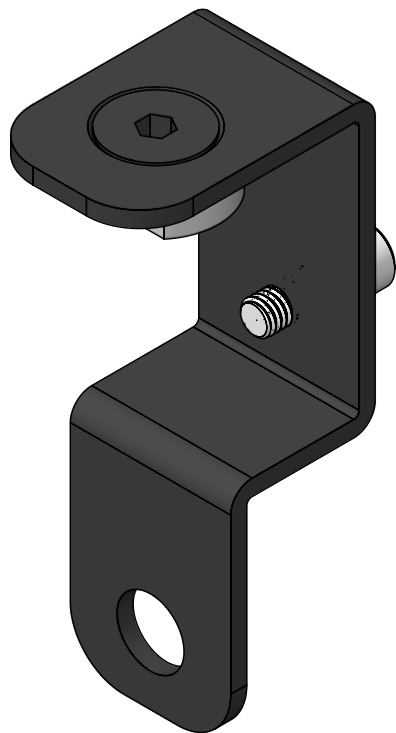


Item name	Material info
1. Bracket	powdercoated steel
2. Bolt M8x10	steel
3. Bolt M6x16	steel
4. Sliding nut M8	steel



creative textile solutions

This document, or parts thereof must not be communicated to any third party, or reproduced in any form or media without the prior written consent of WENTEX.

This project has been granted a limited term non-exclusive license to utilise the designs and other proprietary information provided by WENTEX in connection with this project. For this project only.

PROJECT NAME		
Eurotrack		
CLIENT		
WENTEX		
ITEM NAME		
end stop		
ITEM CODE		
89523;		
MATERIAL INFO		
-Steel sheet 3mm thick -Steel bolts,nuts		
SURFACE FINISH		
electrophoretic coating - black		
SCALE	PAPER	DIMENSIONS
1:1	A4	mm
DRAWN BY		PRINT DATE
AJ		14.04.2020
REMARK		
SHEET NUMBER		
001		