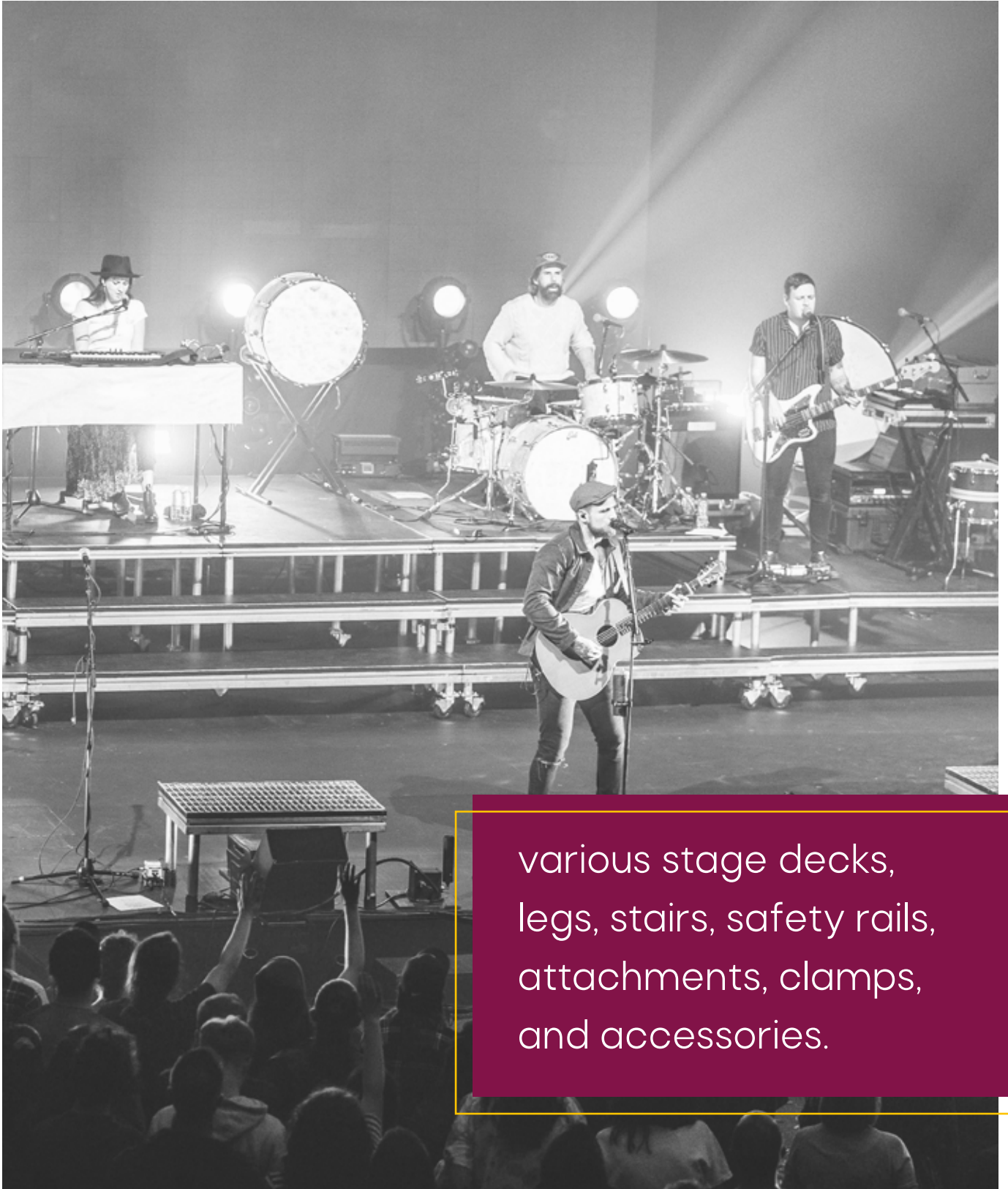


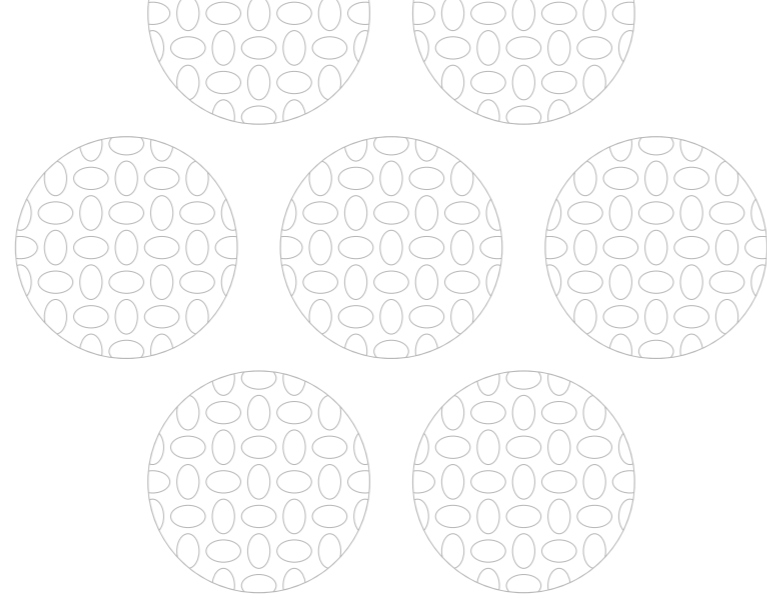
FORTEX

STAGE750



various stage decks,
legs, stairs, safety rails,
attachments, clamps,
and accessories.

TAKE THE HIGHER GROUND



 TÜV Rheinland
 Certification
 EN 1090
 EU standard

STAGE750

The surface is waterproof and contains an unique anti-slip grip profile. This makes the stage elements suitable for both indoor and outdoor use. The FORTEX stages are also compatible with other leading brands. This is one of the reasons why you are extremely flexible with these stage elements.



750kg/m²
capacity



outdoor
approved



lightweight
material



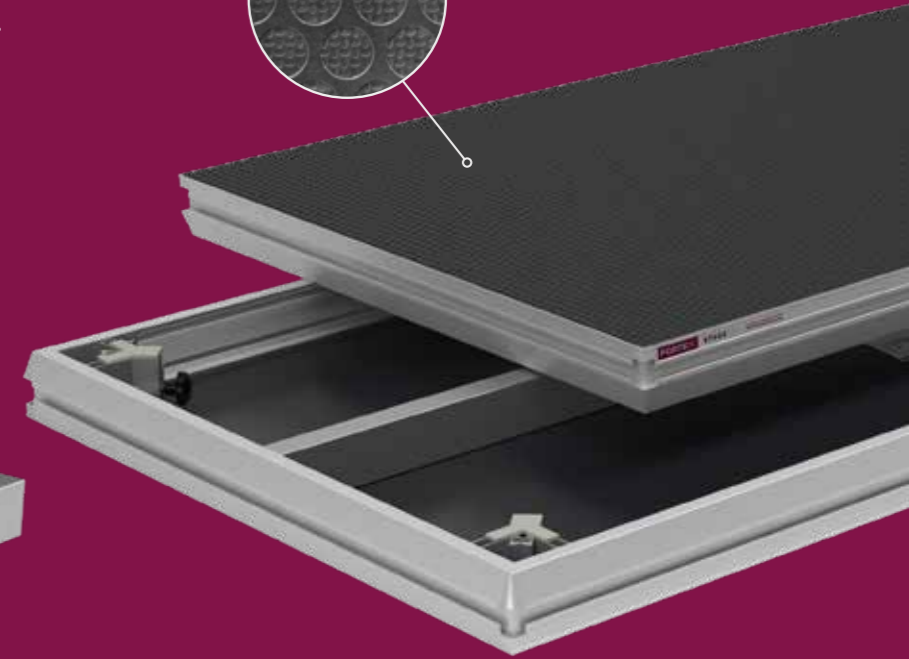
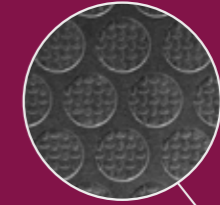
black hexa
anti-slip



ADJUSTABLE AND MODULAR STAIRS - MORE INFORMATION ON PAGE 6

STAGESPECS

- Compatible with other leading brands.
- Suitable for indoor and outdoor use.
- Compatible with scaffold tubes.
- Stacking height of 90 mm.
- Lightweight material.



The stages are extremely easy to assemble because of its universal aluminum profile and module clamps. Within minutes you have connected the stages and / or adjusted the legs at the right height.



FSD-0505-H
HEXA 50X50 CM



FSD-1005-H
HEXA 100X50 CM



FSD-1010-C-H
HEXA ROUND 100X100 CM



FSD-1010-H
HEXA 100X100 CM



FSD-1010-T-H
HEXA TRIANGLE 100X100 CM



FSD-2005-H
HEXA 200X50 CM



FSD-2010-CL-H
HEXA ROUND LEFT 200X100 CM



FSD-2010-CR-H
HEXA ROUND RIGHT 200X100 CM



FSD-2010-H
HEXA 200X100 CM



FSD-2010-TL-H
HEXA TRIANGLE LEFT 200X100 CM



FSD-2010-TR-H
HEXA TRIANGLE RIGHT 200X100 CM



SCAN ME

DECKS

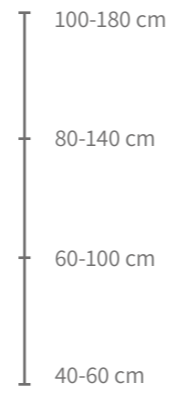
Our STAGE750 decks are rated for 750kg/m² (154lb/sqft) and have a hexa anti-slip surface. They meet the demands of small and large events and are built to withstand any unpleasanties while touring. And they weigh only 32kg (71lb). In short, the perfect choice for your indoor and outdoor use.



TELESCOPIC LEGS

The Fortex telescopic stage legs with a 50x50 and 60x60mm profile all have a built-in ruler for easy setting of the desired height.

They are available in various height ranges and can be used indoors and outdoors. Stage legs with a 48.3mm diameter are available in fixed heights.



MOUNTING METHOD

An important feature of the stage elements is the ability to mount different types of legs. They can fit 48.3mm round, 50x50mm and 60x60mm square legs.



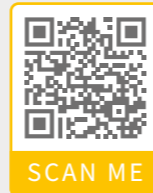
Ø 48.3 mm



50 x 50 mm



60 x 60 mm



FSLT-L030-L050
STAGE HEIGHT 30-50 CM



FSLT-L040-L060
STAGE HEIGHT 40-60 CM



FSLT-L050-L080
STAGE HEIGHT 50-80 CM



FSLT-L060-L100
STAGE HEIGHT 60-100 CM



FSLT-L070-L120
STAGE HEIGHT 70-120 CM



FSLT-L080-L140
STAGE HEIGHT 80-140 CM



FSLT-L100-L180
STAGE HEIGHT 100-180 CM



FSL-L020
Ø48,3 x 20 CM



FSL-L040
Ø48,3 x 40 CM



FSL-L060
Ø48,3 x 60 CM



FSL-L080
Ø48,3 x 80 CM



FSL-L100
Ø48,3 x 100 CM



FSL-L120
Ø48,3 x 120 CM



FSLA-L020
Ø48,3 x 20 +/- 3 CM



FSLA-L040
Ø48,3 x 40 +/- 3 CM



FSLA-L060
Ø48,3 x 60 +/- 3 CM



FSLA-L080
Ø48,3 x 80 +/- 3 CM



FSLA-L100
Ø48,3 x 100 +/- 3 CM



FSLA-L120
Ø48,3 x 120 +/- 3 CM



FSDR-10
STAGE SAFETY RAIL 100 CM



FSDR-20
STAGE SAFETY RAIL 200 CM



FSA-SRCC
SAFETY RAIL CORNER CONNECTOR



FSA-SRC
SAFETY RAIL CONNECTOR



FIXED LEG

For even surfaces like exhibition halls, concert venues or other indoor stages. Easy and quick to set up.

ADJUSTABLE LEG

Use it on slightly uneven surfaces. The adjustable base provides a +/- 3 cm clearance to level out your stage.

TELESCOPIC LEG

Adjustable in height. Change a stage of 60 cm, to 80 cm, or 100 cm? No problem at all. FORTEX Adjustable legs will do the trick.

“STEP UP YOUR GAME



ADJUSTABLE STAIRS

The Fortex adjustable stairs provide a quick and smooth assembly. They are made out of heavy-duty steel profiles. The steps are made of plywood and contain our HEXA anti-slip coating for maximum grip, making them suitable for both indoor and outdoor use.



FSSA-2
ADJUSTABLE 2 STEP STAIRS 40-60 CM



FSSA-4
ADJUSTABLE 4 STEP STAIRS 60-100 CM



FSSA-5
ADJUSTABLE 5 STEP STAIRS 80-140 CM



FSSA-7
ADJUSTABLE 7 STEP STAIRS 100-180 CM



FSSA-HR-L
USE WITH THE 4 STEP STAIRS



FSSA-HR-R
USE WITH THE 4 STEP STAIRS



SCAN ME

Because the staircase has a non-slip top layer, it is weatherproof. The stairs are suitable for both indoor and outdoor use.

MODULAR STAIRS

The Fortex Modular stairs are available in four various heights. The stairs have adjustable feet which make it possible to place and level the stairs on uneven surfaces. The steps are made of plywood and have our anti-slip coating to ensure maximum grip, making it suitable for both indoor and outdoor usage.



FSSM-020
MODULAR STEP 20 CM



FSSM-040
MODULAR STEP 40 CM



FSSM-060
MODULAR STEP 60 CM



FSSM-080
MODULAR STEP 80 CM



FSSM-HR-2
MODULAR STEP HANDRAIL 2/3 STEPS



FSSM-HR-3
MODULAR STEP HANDRAIL 3/4 STEPS



DECK-ATTACHMENT
INCLUDED WITH THE FSSM-020



FORTEX



The stairs are easily mounted to the FORTEX STAGE750 decks, using the adapters provided. On both sides of the stairs, the specially designed stair railings can be mounted.

They are available in 4 different sizes: 40 to 60cm, 60 to 100cm, 80 to 140cm and 100 to 180cm.

WWW.FORTEXPRODUCTS.COM



STAGE ACCESSORIES

To level out the decks you can use the self levelling insert which levels the decks. The levellers are easily inserted into the profile of the STAGE750. The leg to leg clamps are designed to connect the legs to each other and create a solid construction. The Deck to Deck clamp is used to connect the Decks to each other.



FSA-CLAMP
DECK TO DECK CLAMP



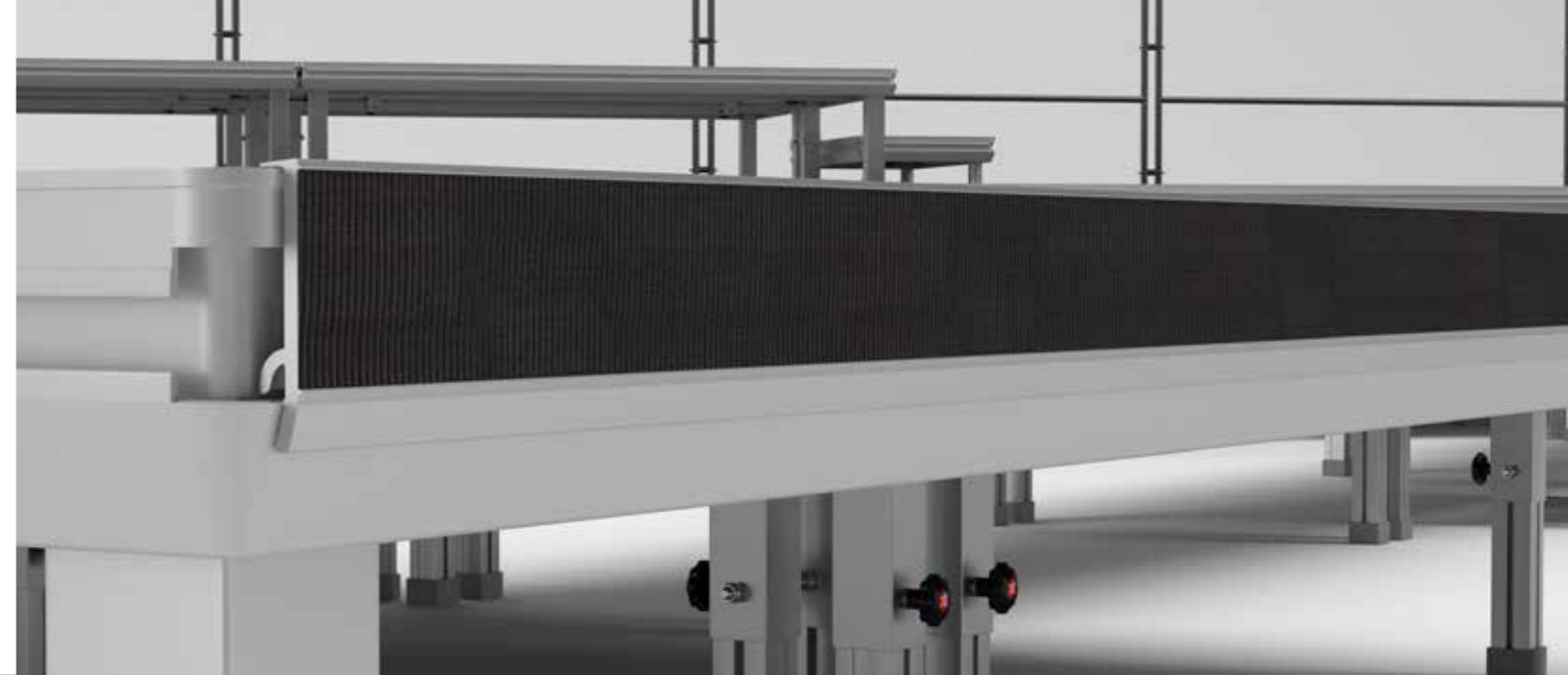
FSA-LVL
DECK LEVELER



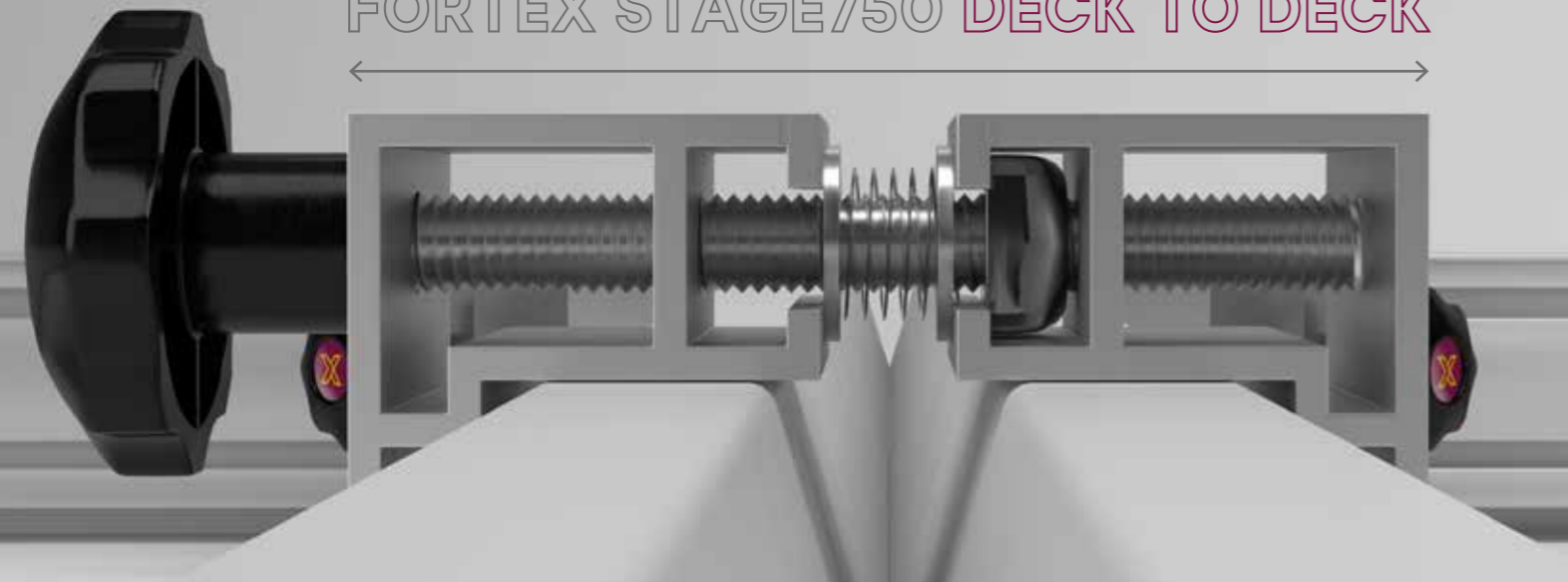
FSA-LTL2CLAMP
LEG TO LEG CLAMP 2X 60MM



FSA-LTL4CLAMP
LEG TO LEG CLAMP 4X 60MM



FORTEX STAGE750 DECK TO DECK



DECK TO DECK CLAMP

The FORTEX STAGE750 deck to deck clamp is meant to connect multiple stage parts to each other. Because of the deck to deck clamps, it's prevented that the stage parts can make an unwanted vertical movement. So there can be a safe / stable construction. It's advised to use 2 clamps per 2000 mm side and 1 clamp and per 1000 mm side.

FORTEX VELCRO SKIRT PROFILE

For easy covering your STAGE750, the FORTEX velcro masking tape is a must-have. The installation takes only a few seconds by clicking the profile into the STAGE750. It is important to note that stairs and handrails cannot be placed in the skirted part of the stage.



FSA-SK RTP05
SKIRTING CLICK PROFILE 47 CM



FSA-SK RTP10
SKIRTING CLICK PROFILE 97 CM



FSA-SK RTP20
SKIRTING CLICK PROFILE 197 CM



FSA-LBS
LEG BRACKET SHORT



FSA-LBL
LEG BRACKET LONG



The FORTEX STAGE750 deck leveller is used to raise multiple decks to equal line height.

The levellers easily slide into the profile of the deck and easily provide line height at adjacent stages.

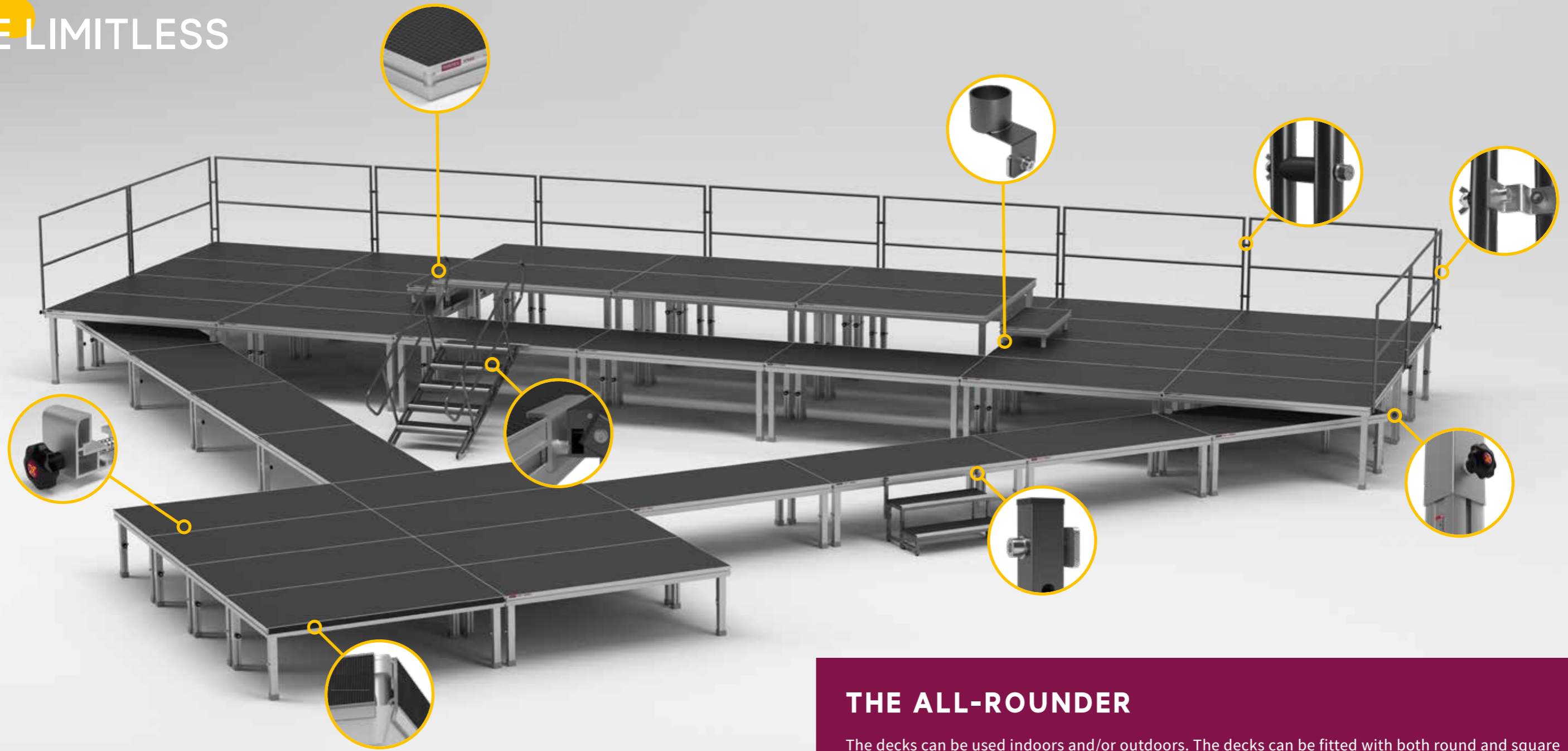


FORTEX DECO-FLANEL
ROLLS - 60M X 20/40/60/80/100/130CM



SCAN ME

“
BE LIMITLESS



STAGE750 DECKS

The Fortex stages are very suitable for building stages and/or raised floors. Tribunes and musicians' podiums are also often built with these components.

The stages are extremely easy to assemble because of its universal aluminum profile and module clamps. Within minutes you have connected the stages.



THE ALL-ROUNDER

The decks can be used indoors and/or outdoors. The decks can be fitted with both round and square legs and are easy to attach under the decks. You can choose the length of the legs in steps of 20 cm up to a maximum of 120 cm.

Each stage can be fitted with stairs, handrails and railings. A stage can also be easily stripped off with a tight or pleated stage skirt.



SCAN ME

Didn't find what you were looking for? Scan the QR code for more information.

WWW.FORTEXPRODUCTS.COM





various stage decks,
legs, stairs, safety rails,
attachments, clamps,
and accessories.



GENERAL

info@fortexproducts.com

+31 (0)546 700 206

www.fortexproducts.com

SALES

sales@fortexproducts.com

+31 (0)546 700 206

www.fortexproducts.com