

Photometric Report



200501 Raccoon Junior P7_4 (RGBM) RAW, , Ordercode 200501

REPORT SUMMARY

Output

Total Lumens: 2974 Lumen
Peak Intensity: 49015 candela
Illuminance @ 5m: 1960 lx

Optical

Beam Angle (50%) 11,3 °
Field Angle (10%) 20,7 °

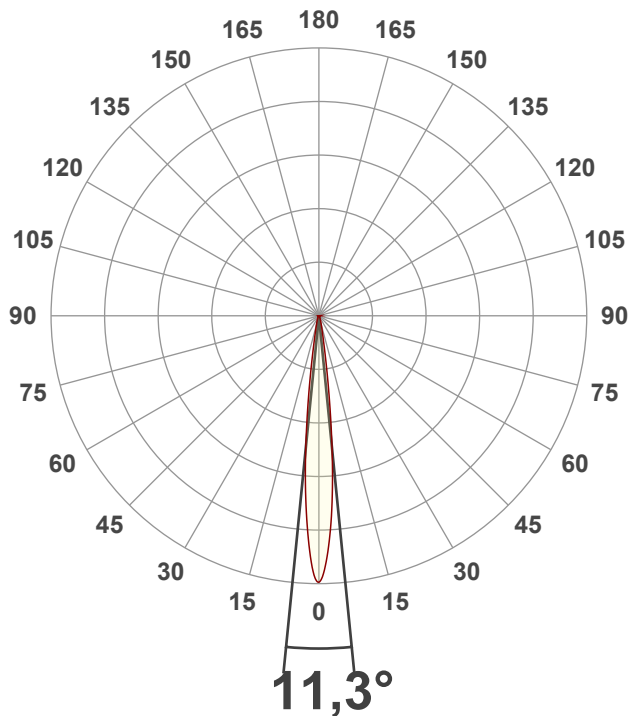
Conditions:

Power Supply: 225 V
Power: 65,6 W
Current: 0,364 A
Power Factor: 0,8

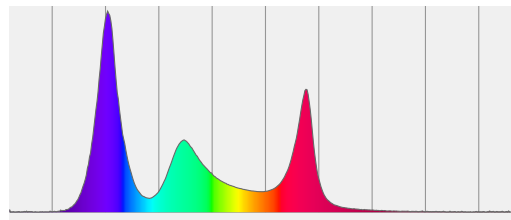


MEASUREMENTS

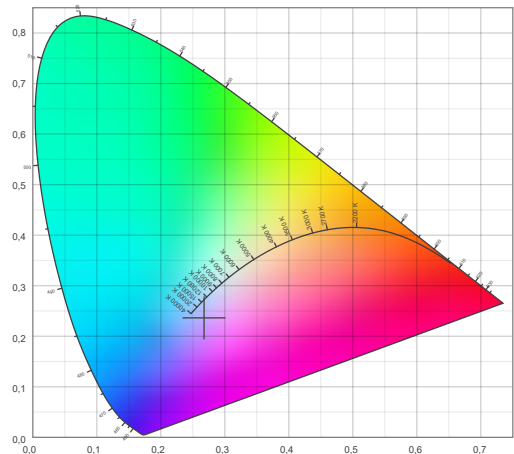
Angular Beam Distribution



Spectral Distribution



CIE 1931

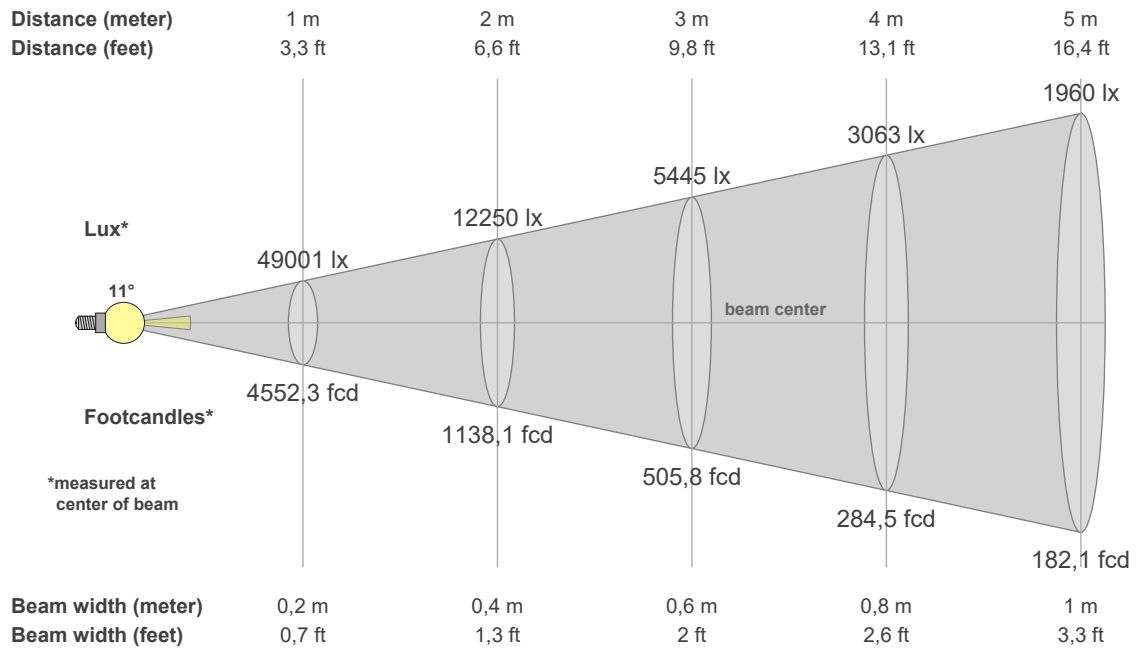


Photometric Report



200501 Raccoon Junior P7_4 (RGBM) RAW, , Ordercode 200501

BEAM DETAILS

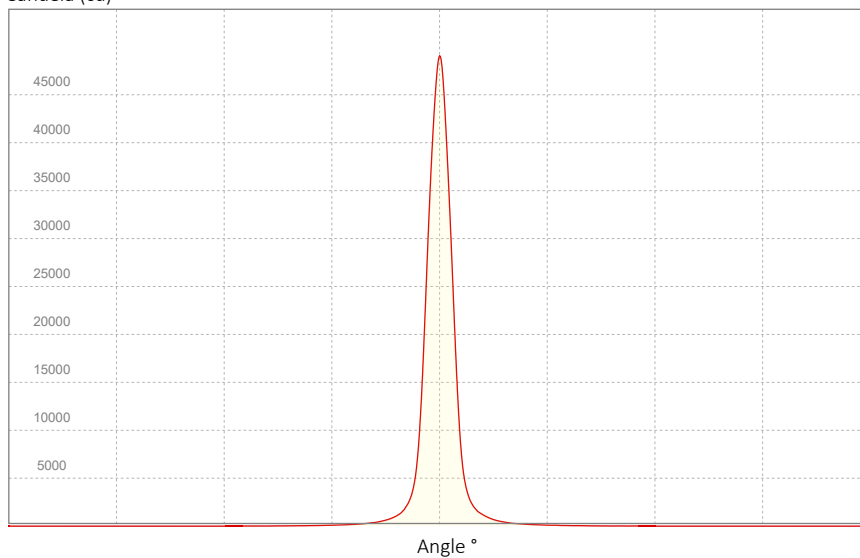


Beam Illuminances from 1-20m

1m	2m	3m	4m	5m	6m	7m	8m	9m	10m	11m	12m	13m	14m	15m	16m	17m	18m	19m	20m
3,3ft	6,6ft	9,8ft	13,1ft	16,4ft	19,7ft	23ft	26,2ft	29,5ft	32,8ft	36,1ft	39,4ft	42,7ft	45,9ft	49,2ft	52,5ft	55,8ft	59,1ft	62,3ft	65,6ft
49001lx	12250lx	5445lx	3063lx	1960lx	1361lx	1000lx	766lx	605lx	490lx	405lx	340lx	290lx	250lx	218lx	191lx	170lx	151lx	136lx	123lx
4552,3fcd	1138,1fcd	505,8fcd	284,5fcd	182,1fcd	126,5fcd	92,9fcd	71,1fcd	56,2fcd	45,5fcd	37,6fcd	31,6fcd	26,9fcd	23,2fcd	20,2fcd	17,8fcd	15,8fcd	14,1fcd	12,6fcd	11,4fcd

Candela (cd)

Linear Distribution Diagram



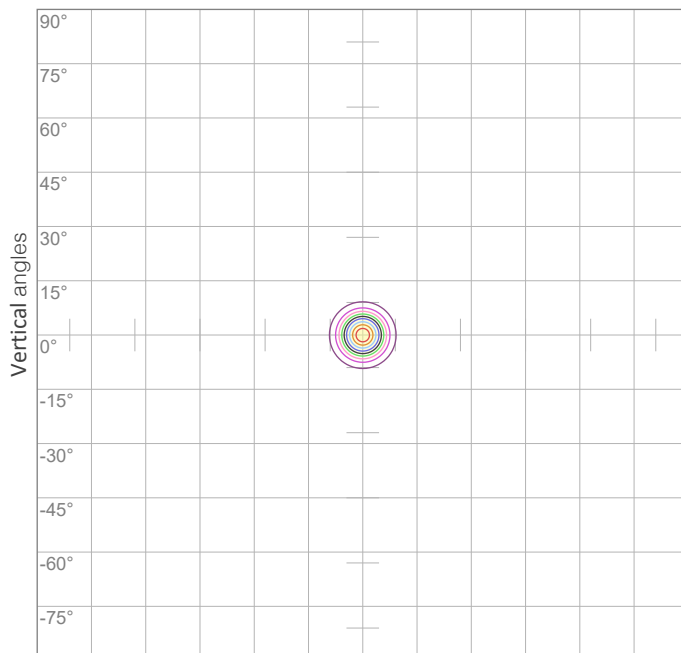
Beam Angle (50%): 11,3 °
 Field Angle (10%): 20,7 °
 Cutoff Angle (3%): 34,8 °

Photometric Report



200501 Raccoon Junior P7_4 (RGBM) RAW, , Ordercode 200501

POLAR DIAGRAMS



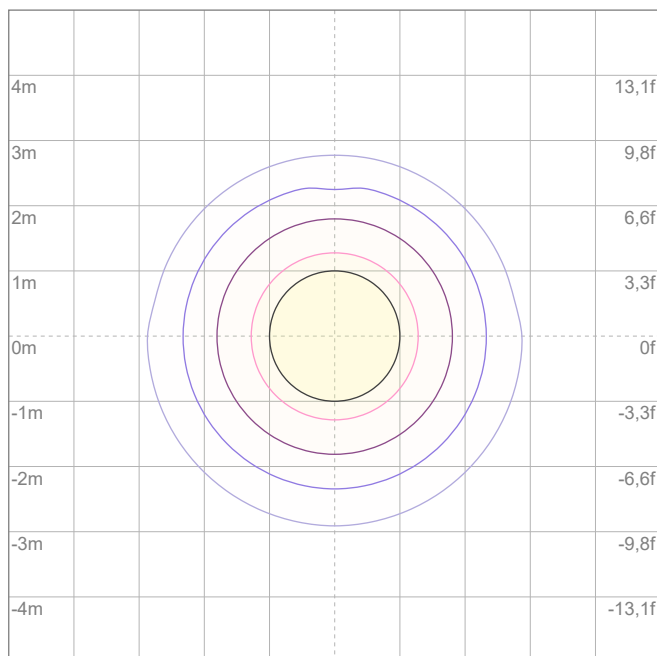
ISO candela diagram

10%	4900 cd
20%	9800 cd
30%	14700 cd
40%	19600 cd
50%	24500 cd
60%	29401 cd
70%	34301 cd

Conditions:

Number of c-planes: 2

Candela at center: 49001 cd



Horizontal angles

ISO lux diagram

3%	14,7 lx
5%	24,5 lx
10%	49,0 lx
30%	147 lx
50%	245 lx

Conditions:

Number of c-planes: 2

Lux at center: 490 lx

Lux distribution on a surface when lamp is mounted at 10 meters from the surface.

Mounting height: 10 meters (33 feet)

Photometric Report



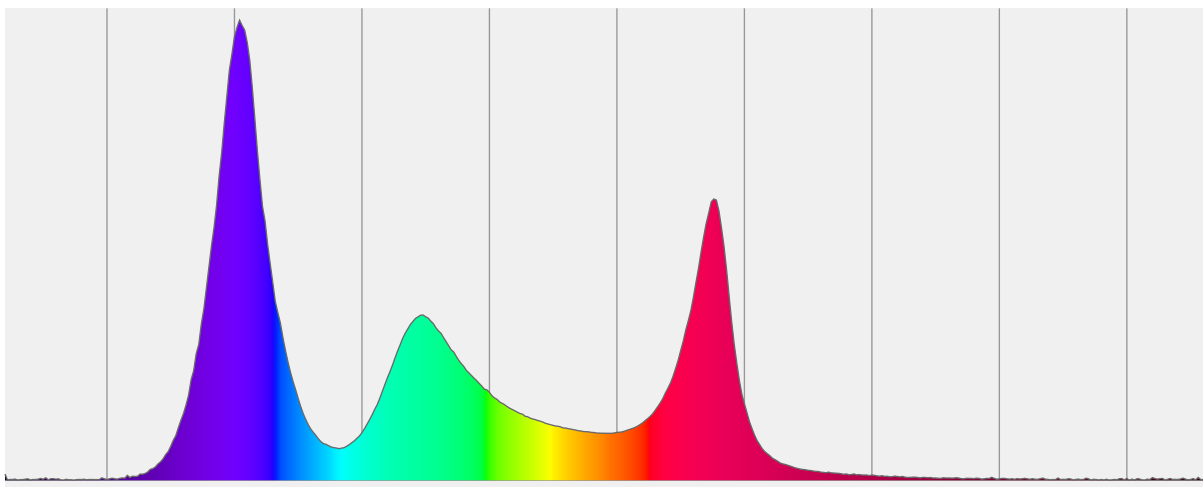
200501 Raccoon Junior P7_4 (RGBM) RAW, , Ordercode 200501

CHROMATICITY REPORT

Total Lumens: 2974 lm
Peak Intensity: 49015 cd
1st Dominant Wavelength: 452 nm
2nd Dominant Wavelength: 638 nm



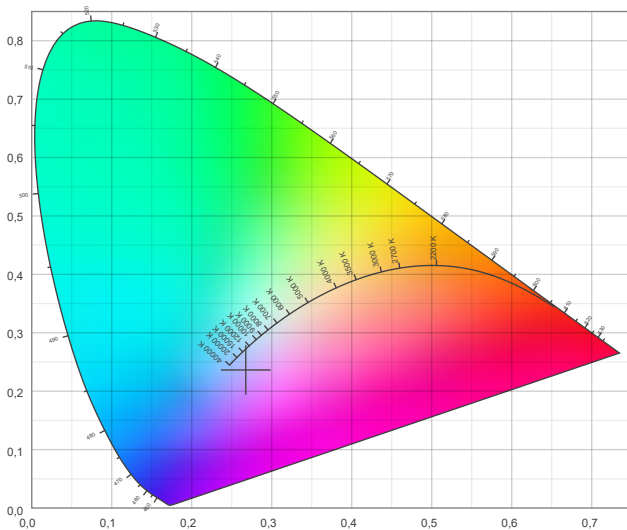
Spectral Distribution



Color

CIE 1931 Coordinates:
X: 0,268 Y: 0,236

CIE 1931



CIE 1931 - Detail

